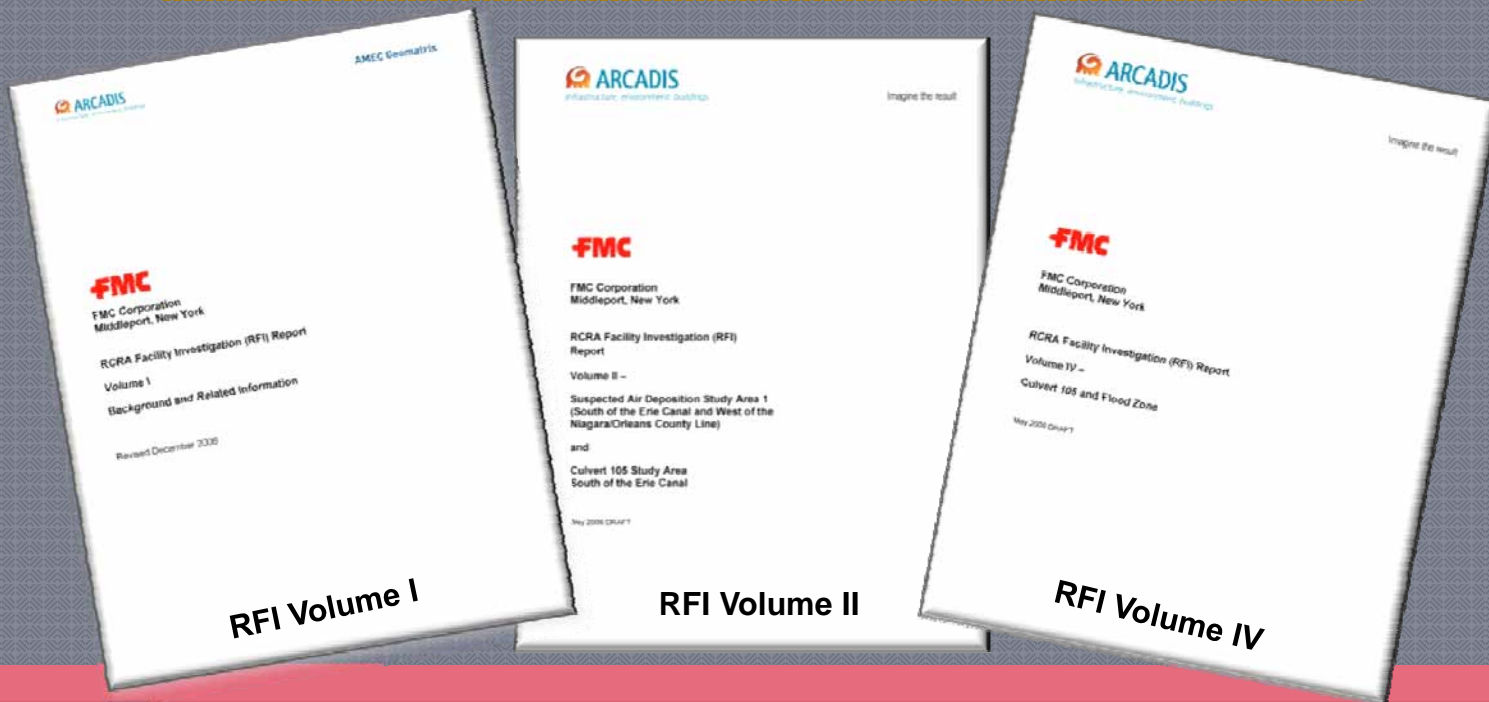


# RCRA Facility Investigation (RFI) Draft Report Volumes I, II and IV FMC Corporation, Middleport, NY

JUNE 10, 2009 PUBLIC MEETING



# Today's Presentation Outline

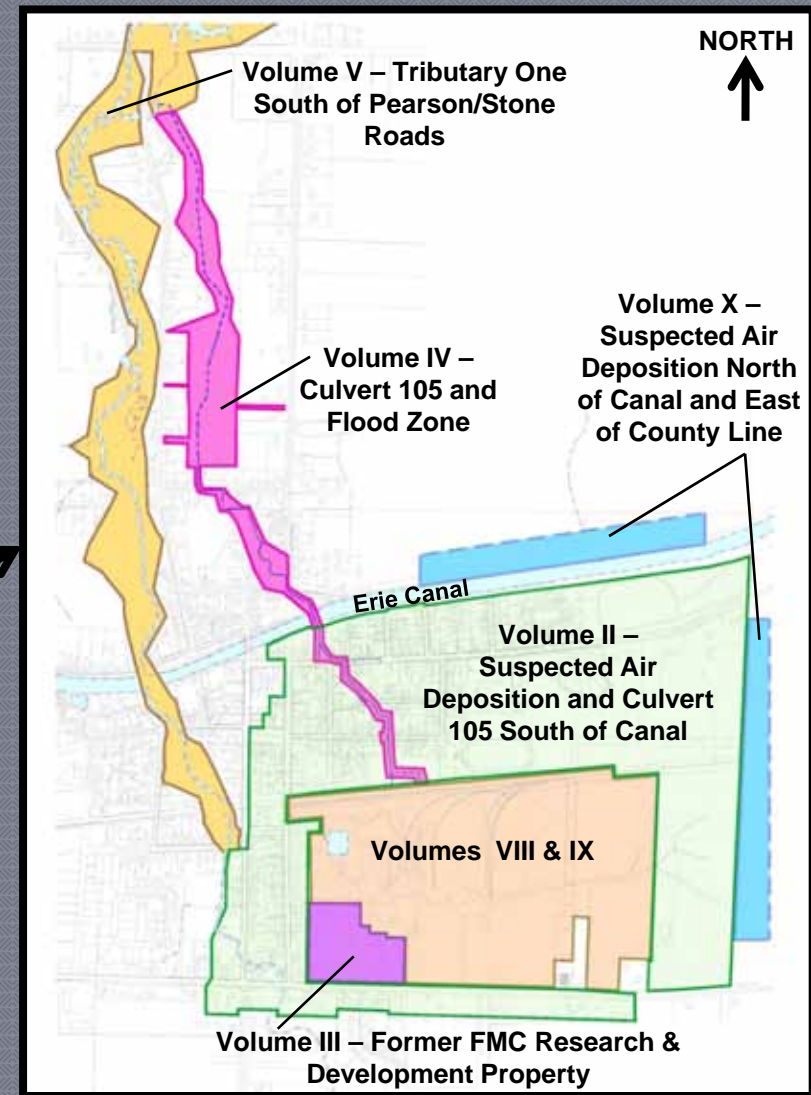
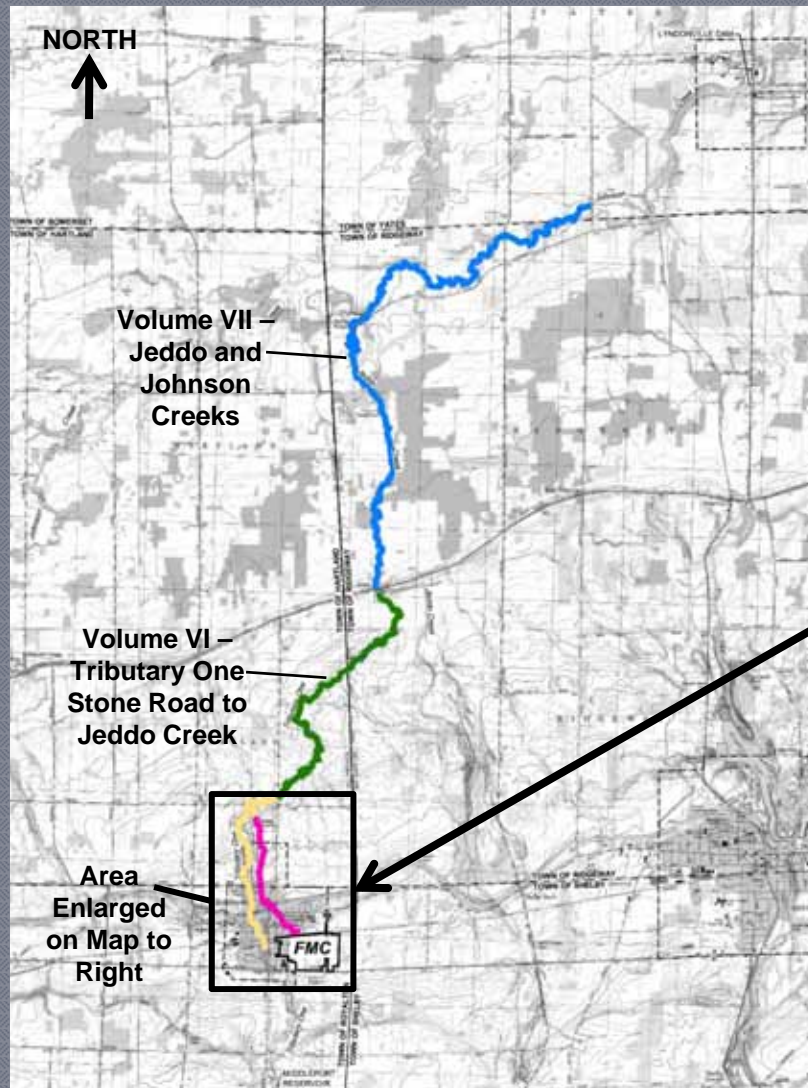
- Purpose of the RFI Report
- Draft RFI Report Volume I –  
Background and Related Information
- Draft RFI Report Volume II –  
Suspected Air Deposition Study Area and  
Culvert 105 South of the Erie Canal
- Draft RFI Report Volume IV –  
Culvert 105 and Flood Zone

# Purpose of the RFI Report

- RCRA regulatory requirement
- Evaluates nature and extent of constituents due to historical releases from the FMC Plant Site
- Presents information to support a Corrective Measures Study (CMS)
- RFI Report consists of 11 volumes

# Draft RFI Report Volume I

## Maps of RFI Study Areas



# Draft RFI Report Volume I

## Background and Related Information

### Contents include:

- Regulatory summary
- Discussion of RFI Study Areas (9 separate areas)
- Current and historical FMC Facility operations
- Current and historical land use in the area
- Previous and on-going environmental investigations, monitoring programs, and remedial activities
- Middleport soil arsenic background studies

# Draft RFI Report Volume I

## 2003 Gasport Background Soil Arsenic Data

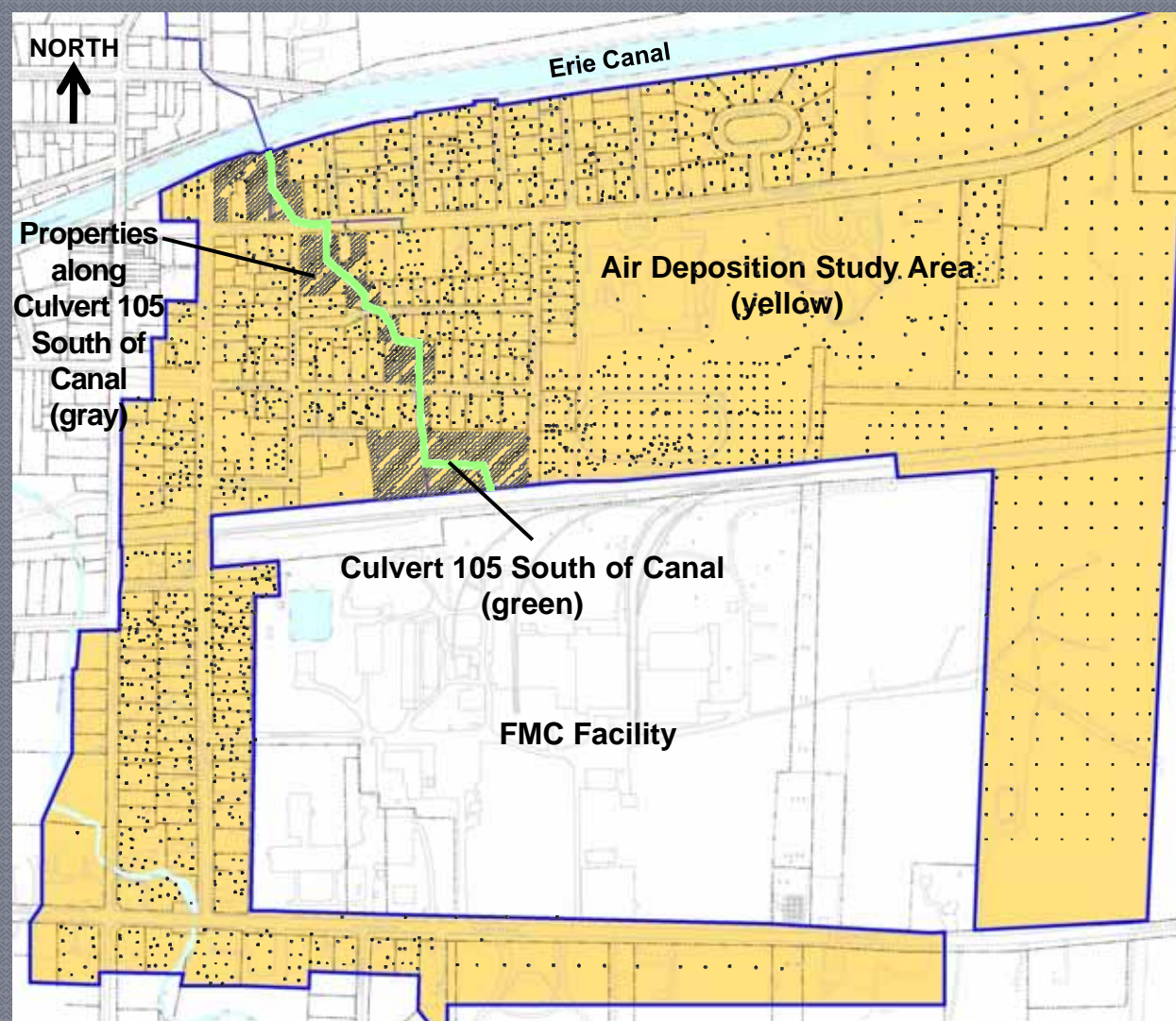
Property Type	Number of Samples	Range of Concentrations (mg/kg)
Orchard	12	3.1 to 121.3
Wooded / Overgrown / Agricultural Crop Field	56	3.1 to 56.7
Commercial / Industrial	12	2.2 to 32.8
Residential / School	23	3.3 to 21.1



# Draft RFI Report Volume II

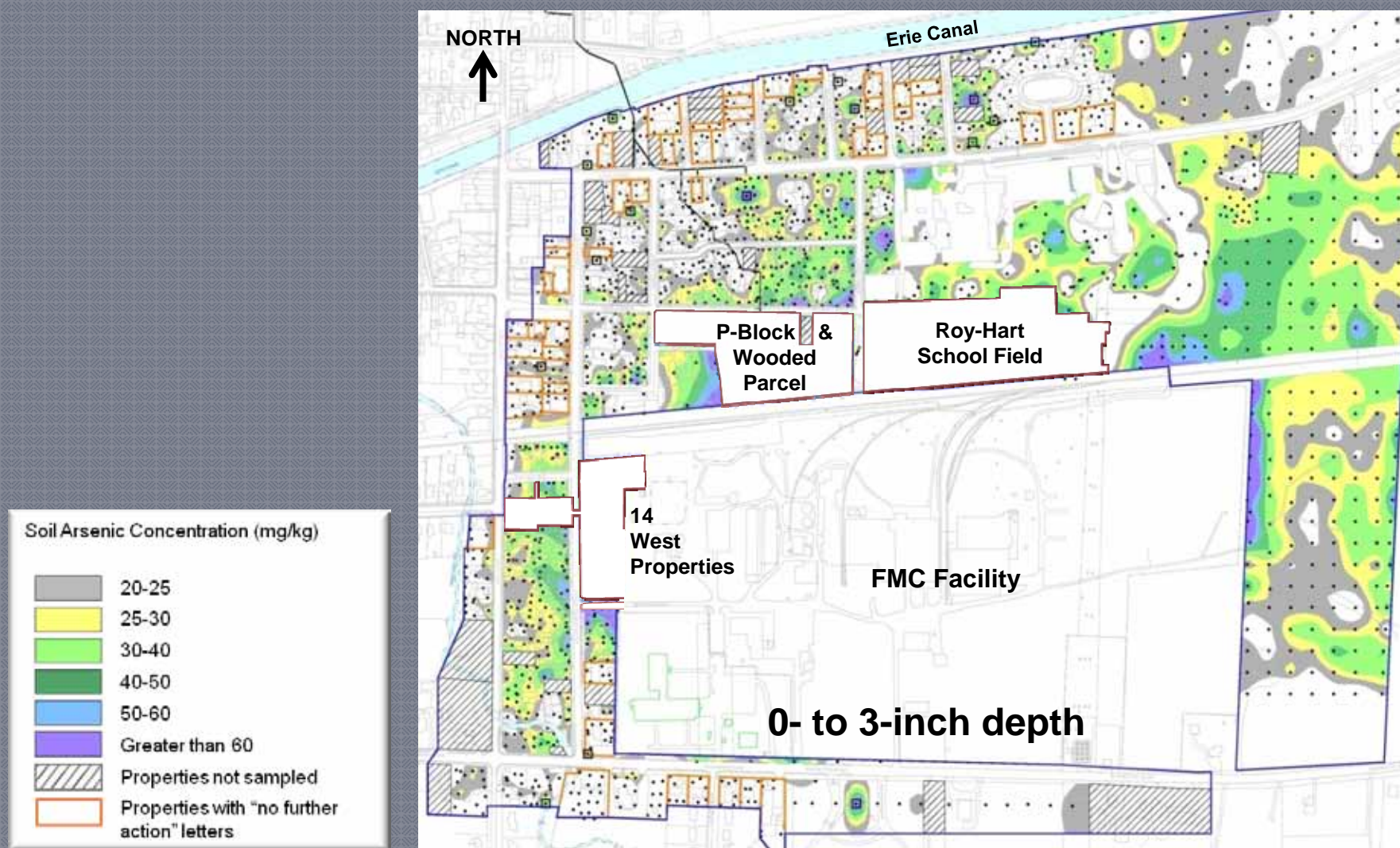
## Soil Sampling

- 255 properties sampled
- 30 properties not sampled
- 2,411 soil sample points
- 5,623 soil sample results for arsenic
- 530 soil sample results for other constituents



# Draft RFI Report Volume II

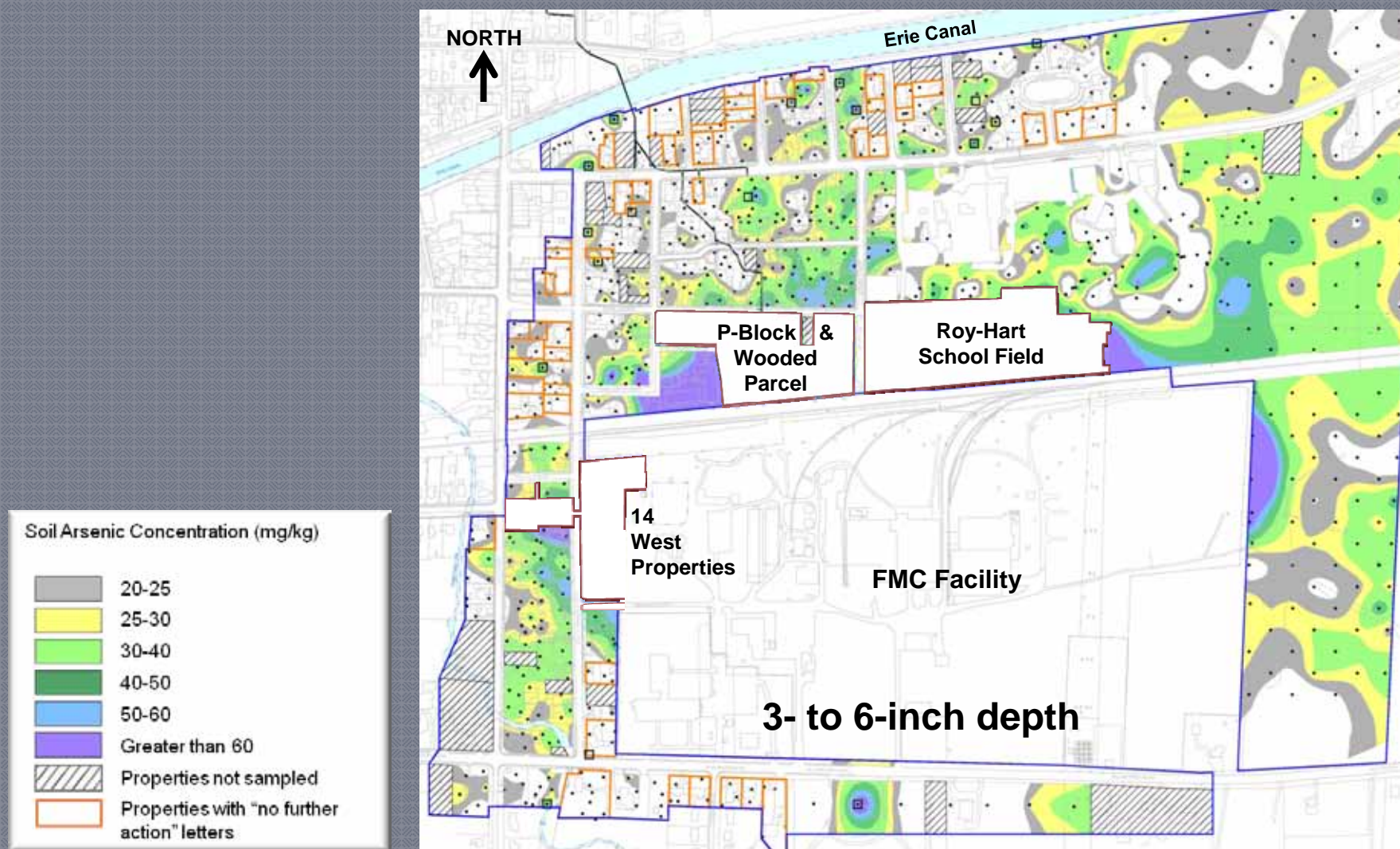
## Arsenic in Soil Results





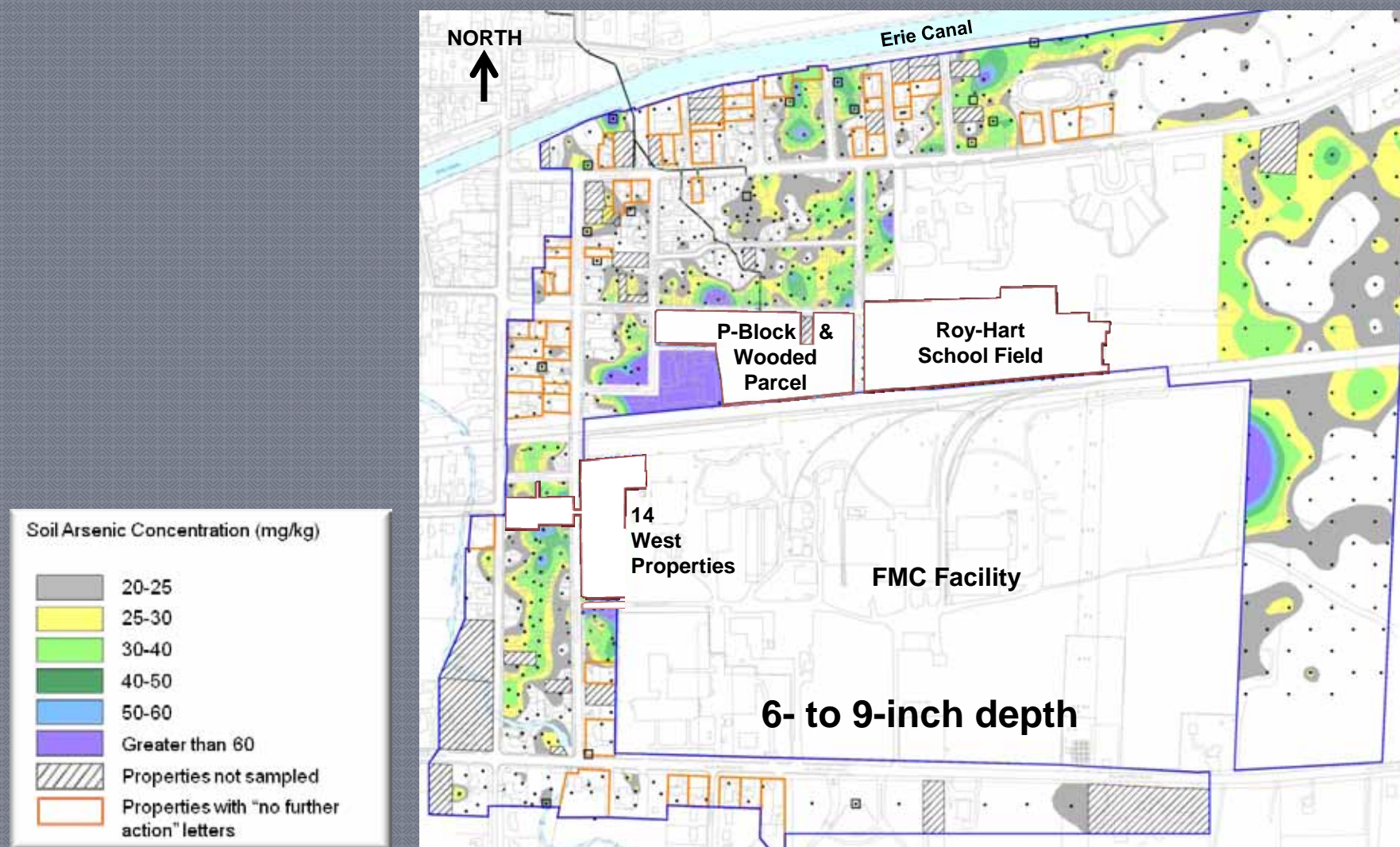
# Draft RFI Report Volume II

## Arsenic in Soil Results



# Draft RFI Report Volume II

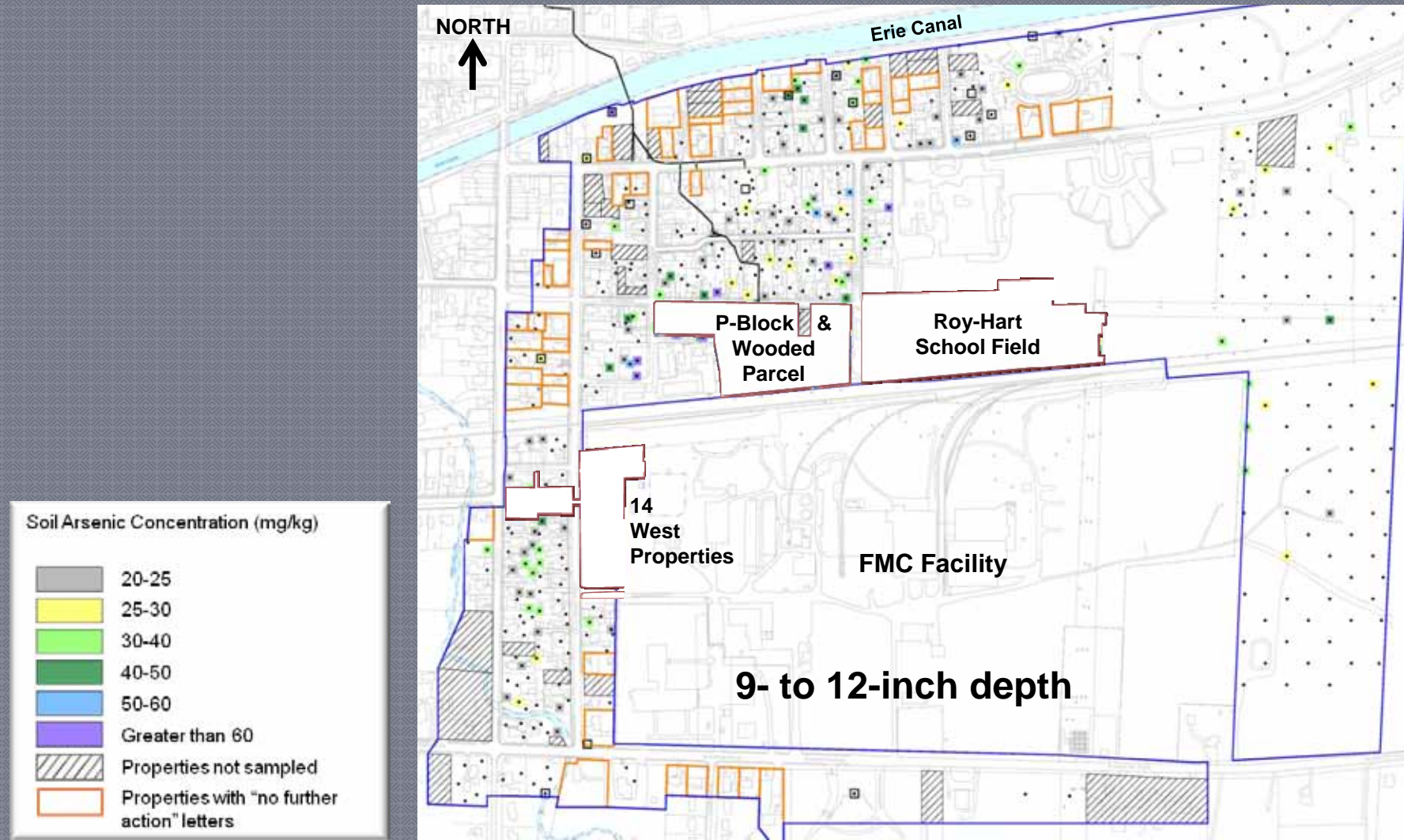
## Arsenic in Soil Results





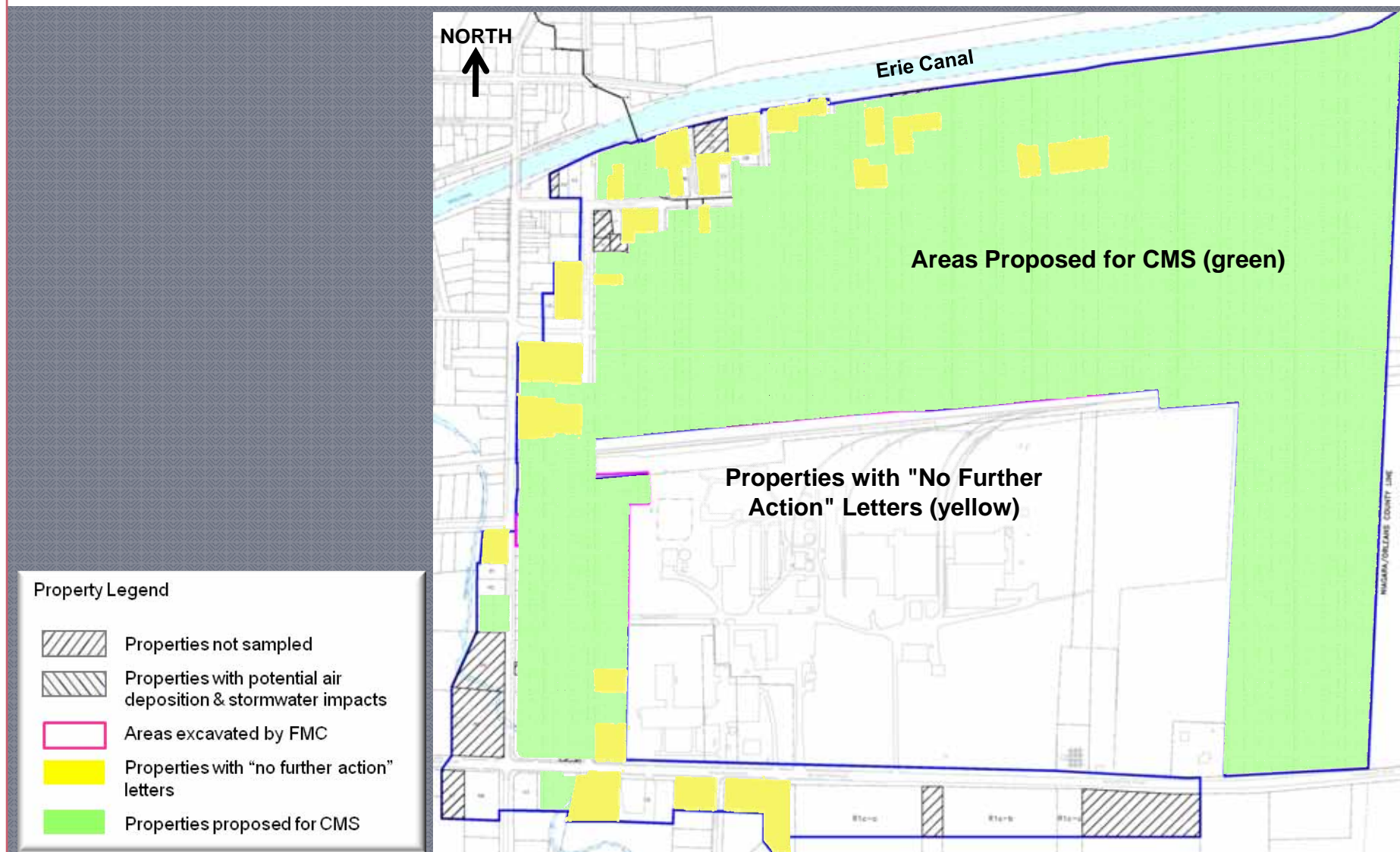
# Draft RFI Report Volume II

## Arsenic in Soil Results



# Draft RFI Report Volume II

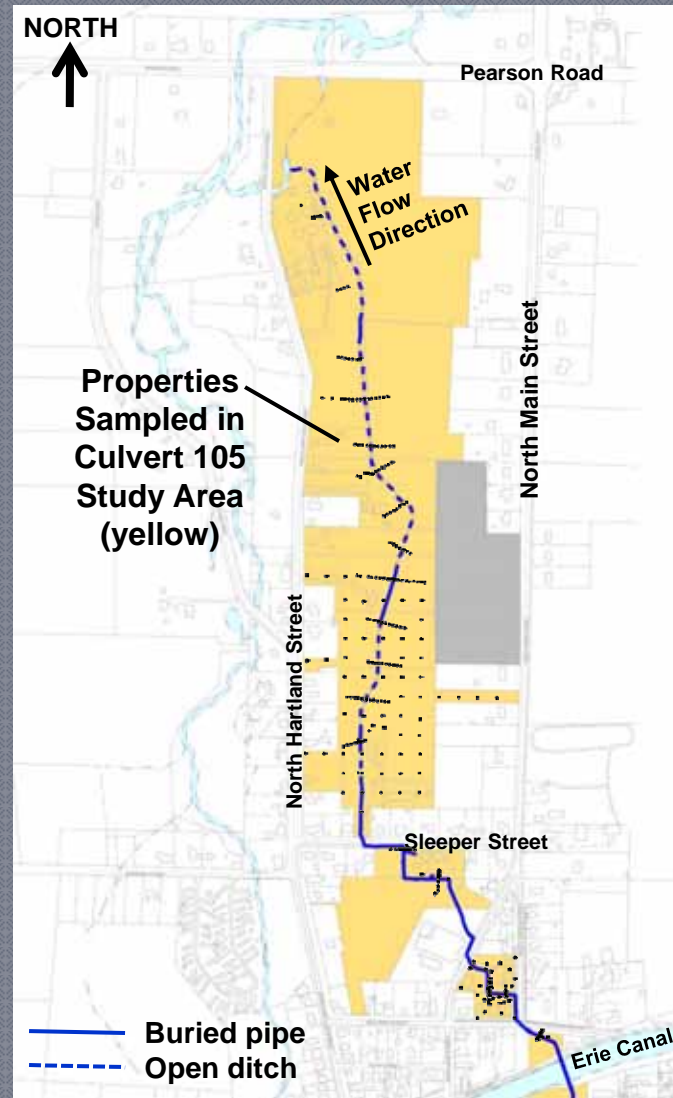
## Areas to be Included in Proposed CMS



# Draft RFI Report Volume IV

## Soil and Sediment Sampling

- 25 properties sampled
- 299 soil/sediment sample points
- 1,303 sample results for arsenic
- 82 sample results for other constituents





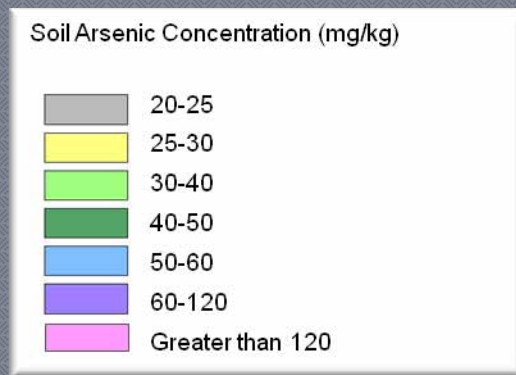
# Draft RFI Report Volume IV

## Arsenic in Soil (1 of 2 slides)



# Draft RFI Report Volume IV

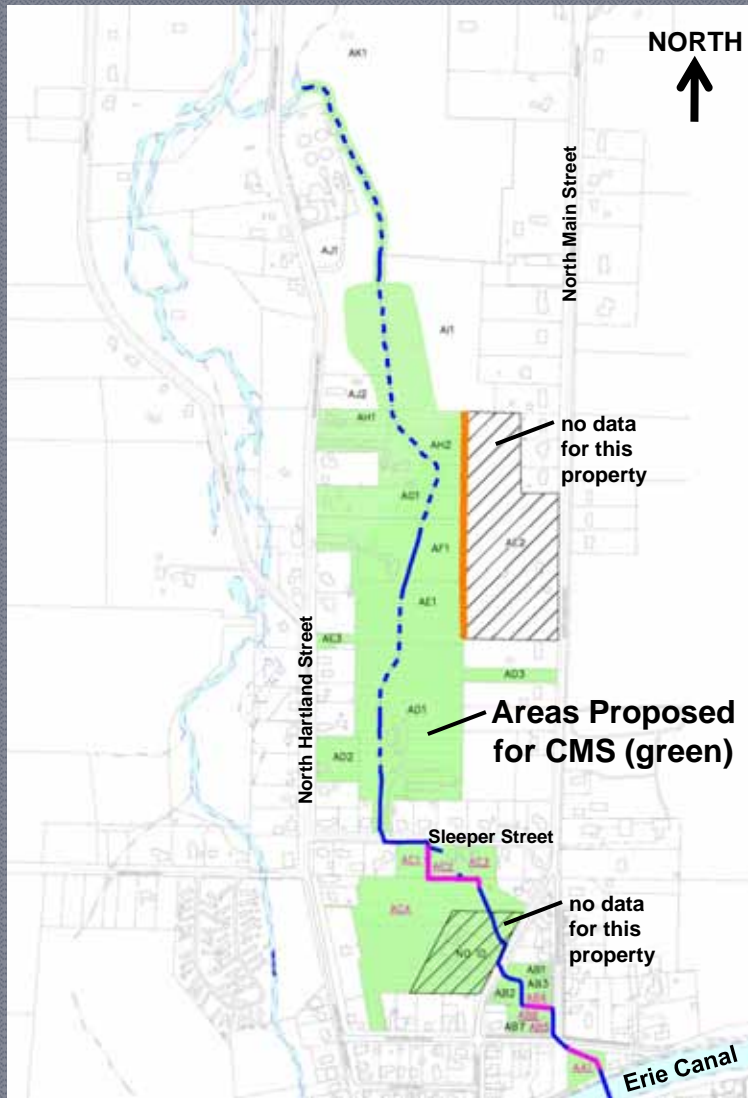
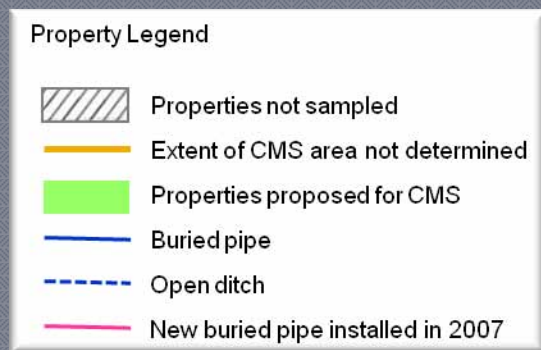
## Arsenic in Soil (2 of 2 slides)



0- to 12-inch depth

# Draft RFI Report Volume IV

## Areas to be Included in Proposed CMS



# Draft RFI Report Volume II & Volume IV

## Summary of Findings

- FMC-related constituents have been adequately evaluated in soil/sediment in air deposition and Culvert 105 study areas
- Arsenic data define the limits of potential impact to soil/ sediment from historical operations at the FMC Plant Site
- Properties that will not require further remediation or evaluation have been identified based on several factors
- Properties and portions of properties have been identified for further evaluation in the CMS for these study areas
- Sufficient information exists to support the CMS for these study areas

# What's Next

- Public Comment Period for Draft RFI Volumes I, II and IV
  - Public provide comments May 18 through July 2, 2009
- Agencies respond to public comments, may request FMC to modify, and then accept Final RFI Volumes I, II and IV
  - Summer/fall 2009
- Agencies reviewing CMS Work Plan for RFI Volumes II and IV study areas
  - Target date for approval July 31, 2009
- FMC prepares CMS
  - Summer/fall 2009 through early 2010
- Public comment on CMS results; selection of Corrective Measures Alternatives
  - Currently anticipated for mid to late 2010