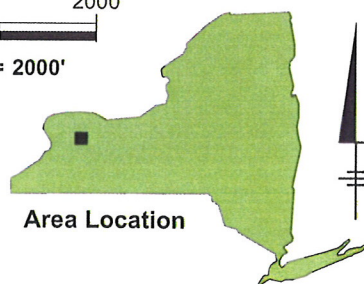


REFERENCE: BASE MAP USGS 7.5 MIN. QUAD., MEDINA, NY, 1980.

2000' 0 2000'

Approximate Scale: 1" = 2000'



Area Location

FMC CORPORATION
MIDDLEPORT, NEW YORK
CAMU APPLICATION

SITE LOCATION MAP



FIGURE
1



LEGEND:

- | | |
|---|------------------------------------|
| | APPROXIMATE FMC PROPERTY BOUNDARY |
|  | APPROXIMATE FMC SECURITY FENCE |
|  | APPROXIMATE LIMIT OF CAMU |
|  | APPROXIMATE LIMIT OF ESI FILL AREA |

NOTE:

1. AERIAL PHOTOGRAPH TAKEN ON 9/28/2000 BY
EL COMP DATA SYSTEMS.

FMC CORPORATION
MIDDLEPORT, NEW YORK
CAMU APPLICATION

FACILITY AERIAL VIEW

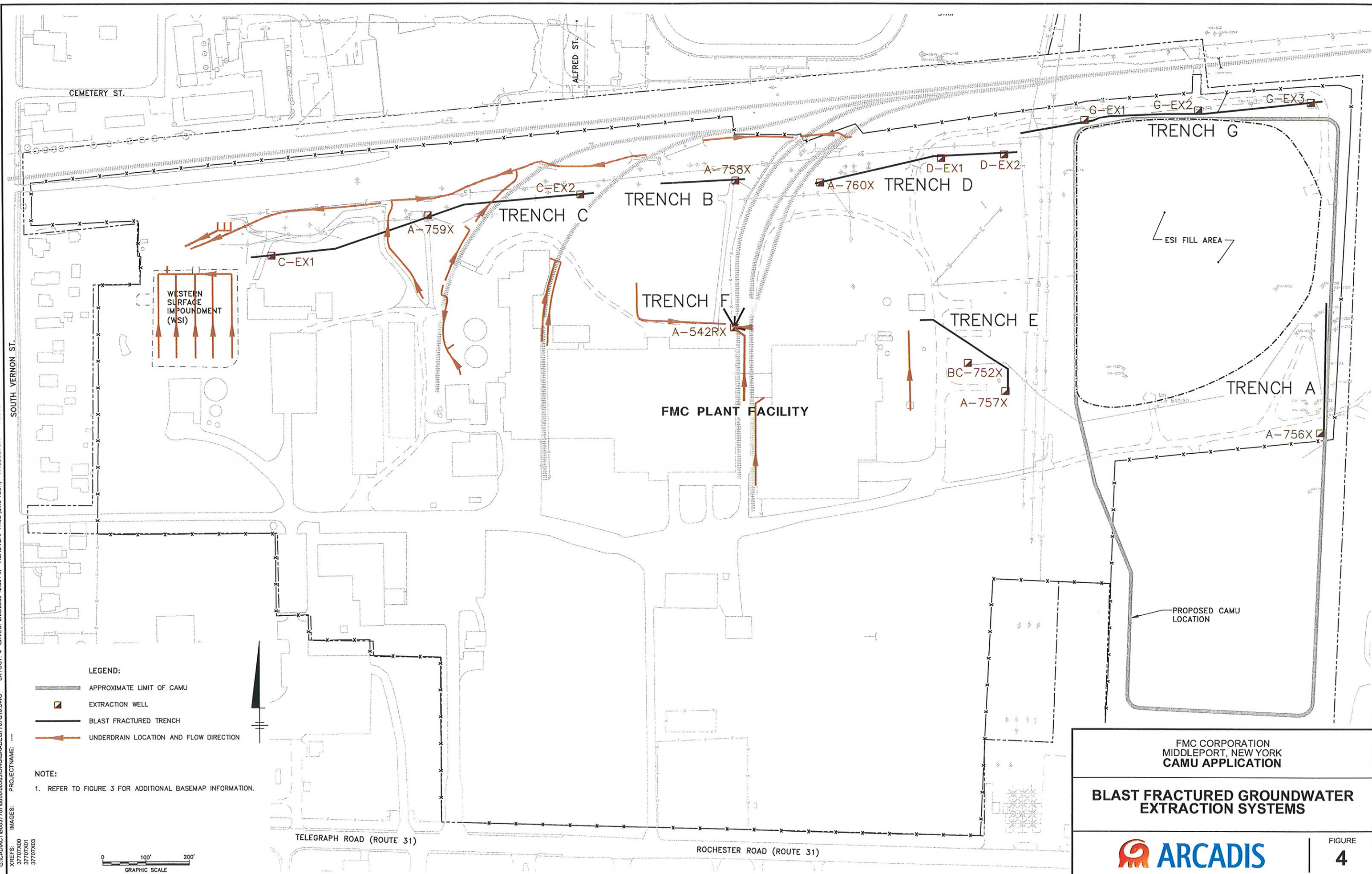


FIGURE
2



CITY:SYRACUSE DIV:GROUP:85 DBAGS PM:CODE LYNON=OFF+REF*
G:\CADD\ACT\B003707\000\003\DWG\GRAD\3707G16.DWG ACADVER: 17.05 (LMS TECH) PAGES: 4 LAYOUT: 4
XREFS: 37707X00 37707X01 37707X03
IMAGES: PROJECTNAME: ---

SAVED: 2/28/2008 12:53 PM PLOTTED: 2/28/2008 12:53 PM BY: SAMOS, ALEX



FMC CORPORATION
MIDDLEPORT, NEW YORK
CAMU APPLICATION

**BLAST FRACTURED GROUNDWATER
EXTRACTION SYSTEMS**



FIGURE
4